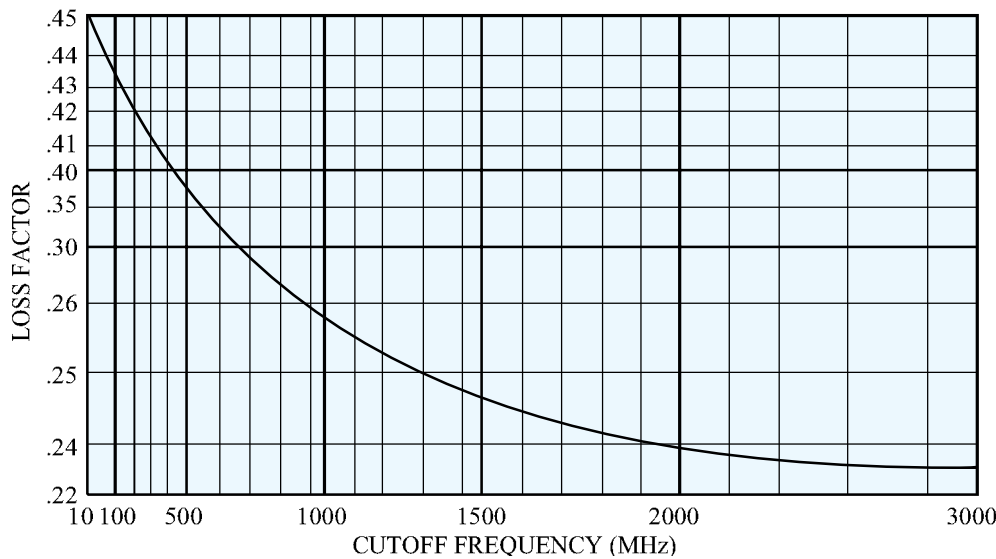




SPECIFICATIONS	STANDARD	*SPECIAL
ELECTRICAL		
Cutoff Frequency (Fco)	1 to 2500 MHz	0.5 to 3000 MHz
Number of Sections Available	3 to 6	2 to 10
Nominal Impedance	50Ω	50 to 300Ω
Maximum Insertion Loss	See Curve	See Curve
Maximum VSWR (0.4 Fco. to Fco.)	1.5/1	1.3/1
Attenuation in the Stopband	See Page 66	See Page 66
Maximum Input Power (Average) (Watts to 10,000 ft.)	2	5
Maximum Input Power (Peak) (Watts to 10,000 ft.)	20	40
ENVIRONMENTAL		
Shock	20 G's	50 G's
Vibration	10 G's	15 G's
Humidity	95% relative	100% relative
Altitude	Unlimited	Unlimited
Temperature Range (Operating)	-40°C to + 85°C	-55°C to + 125°C
Temperature (Non-Operating)	-65°C to + 125°C	-65°C to + 125 °C
MECHANICAL		
Approximate Weight in Grams	L x 4	L x 4
Mounting Provisions	See Next Page	See Next Page

*Contact Lark Engineering



INSERTION LOSS:

The maximum Insertion Loss at cutoff frequency equal to:

$$LF \times N + 0.05dB$$

Where:

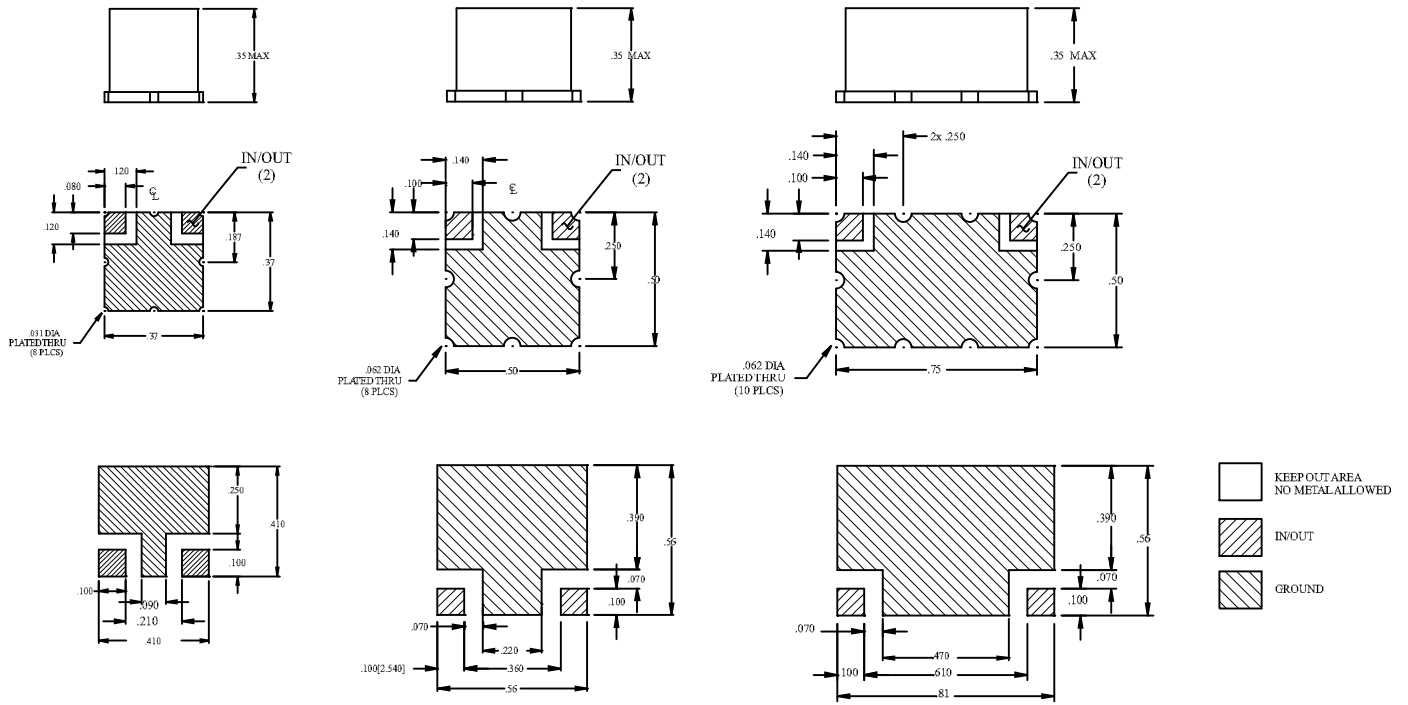
LF = Loss Factor

N = Number of Sections

Example:

A 3 section LMS with a cutoff frequency of 500 MHz would be:

$$0.38 \times 3 = 1.14 + 0.05 = 1.2dB$$



FREQUENCY RANGE	NUMBER OF SECTIONS	W	L	H
1-9.9 MHz	2	0.50	1.00	0.35
	3 to 4	0.50	1.50	0.35
	5 to 6	0.50	2.50	0.35
10-100 MHz	2 to 3	0.50	0.75	0.35
	4 to 5	0.50	1.00	0.35
	6 to 7	0.50	1.50	0.35
101-300 MHz	2 to 3	0.50	0.50	0.35
	4 to 5	0.50	1.00	0.35
	6 to 7	0.50	1.50	0.35
301-1000 MHz	2 to 3	0.50	0.50	0.35
	4 to 5	0.50	0.75	0.35
	6 to 7	0.50	1.00	0.35
1001-3000 MHz	2 to 3	0.37	0.37	0.35
	4 to 5	0.50	0.50	0.35
	6 to 7	0.50	0.75	0.35

For filters over 7 sections - Consult Lark Engineering

The size shown is a standard used by Lark to facilitate low cost, easily reproduced units. Should you require another size, please submit all of your requirements, both electrical and mechanical, to Lark Engineering. This will enable Lark to quote the optimum design for your application.